

TW COURSE
- TRIANGLE, WINDWARD FINISH

Signal	Mark Rounding Order
TW2	Start – 1-2-3 – Finish
TW3	Start – 1-2-3 – 1-3 – Finish
TW4	Start – 1-2-3 – 1-3 – 1-2-3 – Finish
TW5	Start – 1-2-3 – 1-3 – 1-2-3 – 1-3 – Finish

TL COURSE
- TRIANGLE, LEEWARD FINISH

Signal	Mark Rounding Order
TL2	Start – 1-2-3 – 1-3 – Finish
TL3	Start – 1-2-3 – 1-3 – 1-2-3 – Finish
TL4	Start – 1-2-3 – 1-3 – 1-2-3 – 1-3 – Finish
TL5	Start – 1-2-3 – 1-3 – 1-2-3 – 1-3 – 1-2-3 – Finish

WA COURSE
- WINDWARD / LEEWARD WITH OFFSET MARK, WINDWARD FINISH

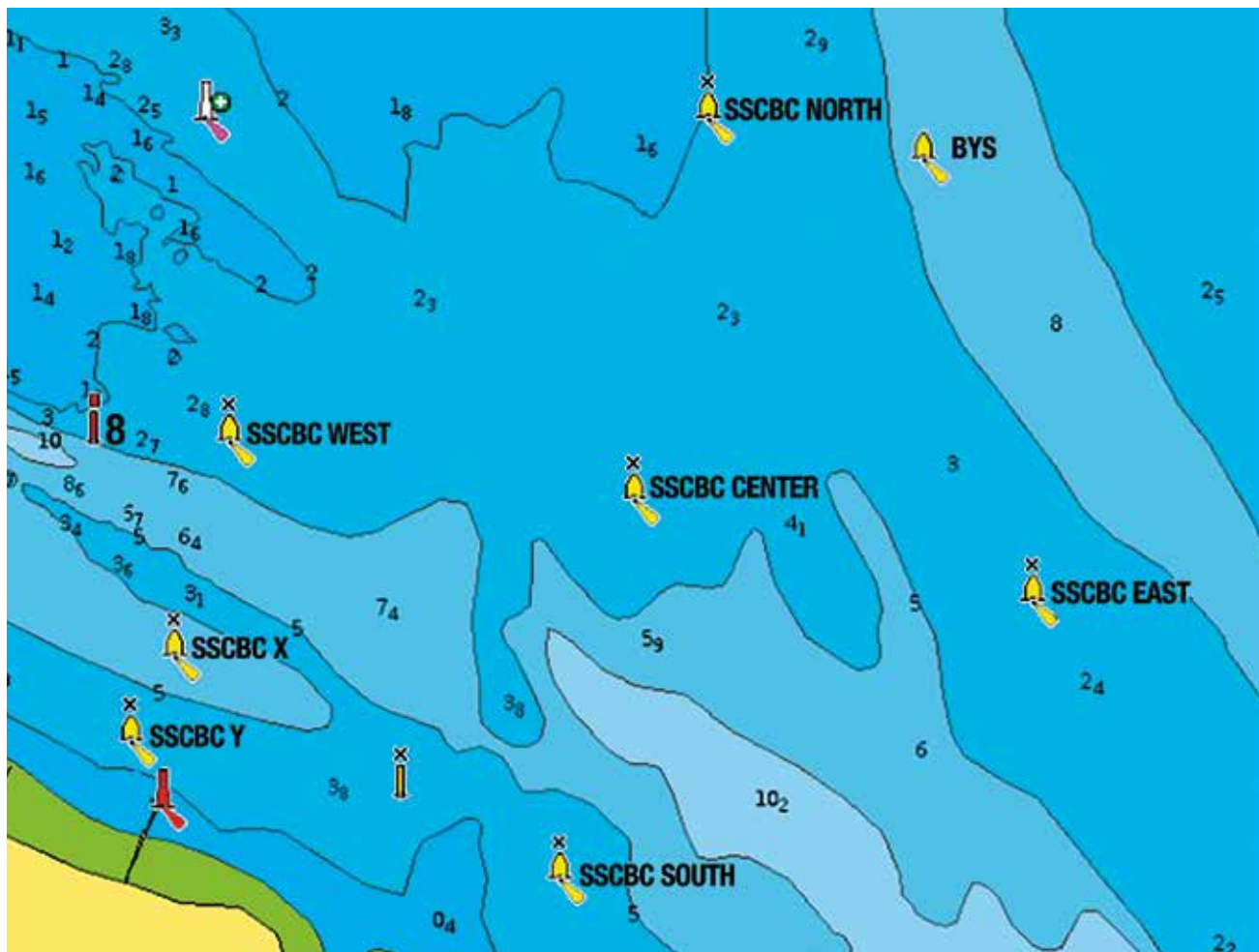
Signal	Mark Rounding Order
WA2	Start – 1-1a-2s/2p – Finish
WA3	Start – 1-1a-2s/2p – 1-1a-2s/2p – Finish
WA4	Start – 1-1a-2s/2p – 1-1a-2s/2p – 1-1a-2s/2p – Finish
WA5	Start – 1-1a-2s/2p – 1-1a-2s/2p – 1-1a-2s/2p – 1-1a-2s/2p – Finish

LA COURSE
- WINDWARD / LEEWARD WITH OFFSET MARK, LEEWARD FINISH

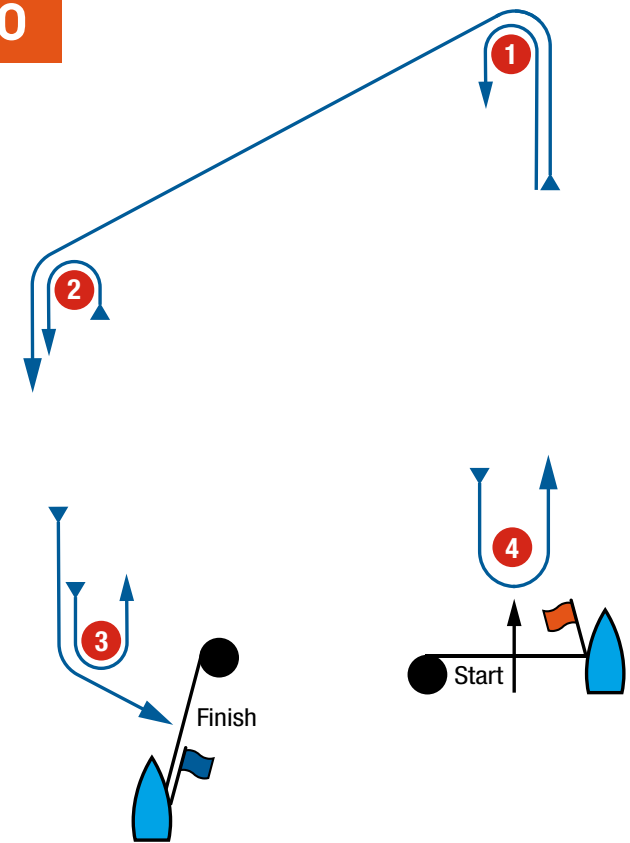
Signal	Mark Rounding Order
LA2	Start – 1-1a-2s/2p – 1-1a-2p – Finish
LA3	Start – 1-1a-2s/2p – 1-1a-2s/2p – 1-1a-2p – Finish
LA4	Start – 1-1a-2s/2p – 1-1a-2s/2p – 1-1a-2s/2p – 1-1a-2p – Finish
LA5	Start – 1-1a-2s/2p – 1-1a-2s/2p – 1-1a-2s/2p – 1-1a-2s/2p – 1-1a-2p – Finish

FIXED COURSES

ALPHA		BRAVO		CHARLIE		DELTA		ECHO		FOXTROT	
Laps		Laps		Laps		Laps		Laps		Laps	
1	START-S-N	1	START-S-C-W	1	START-S-E	1	START-S-C	1	START-S-C-W	1	START-S-W
2	S-N	2	E-W	2	S-E	2	S-C	2	C-W	2	S-W
3	S-N	3	E-W	3	S-E	3	S-C	3	C-W	3	S-W
	8-FIN		8-FIN	4	S-E		8-FIN		8-FIN	4	S-W
				5	S-E					5	S-W
					8-FIN						8-FIN



I/O



I & O TRAPEZOID COURSES

Signal	Course	Signal	Course
I2	Start – 1-4 – 1-2-3 – Finish	O2	Start – 1-2-3 – 2-3 – Finish
I3	Start – 1-4 – 1-4 – 1-2-3 – Finish	O3	Start – 1-2-3 – 2-3 – 2-3 – Finish
I4	Start – 1-4 – 1-4 – 1-4 – 1-2-3 – Finish	O4	Start – 1-2-3 – 2-3 – 2-3 – 2-3 – Finish
I5	Start – 1-4 – 1-4 – 1-4 – 1-4 – 1-2-3 – Finish	O5	Start – 1-2-3 – 2-3 – 2-3 – 2-3 – 2-3 – Finish