

**Race Sailing  
Instructions  
Notice to Competitors**



## Great Fort Run – Saturday 31<sup>st</sup> March 2018

Sailed under the SSCBC Season NOR and SIs as varied by this RSI.

### START - DIVISION 1 WARNING SIGNAL 1400 followed by DIVISION 2

#### Sailors Briefing at 12:30 – Coloured Wall

#### Electronic Navigation Devices – Change to class rules

As areas of the course may have shallows and sandbanks, The CBA has approved a change to the class rules to allow electronic Navigation devices to be used.

#### COURSE – Laid Marks are approximate positions.

	Leave to
Laid (OW) start SI 17	
SSCBC Centre Mark*	port*
SSCBC South Mark	port
Pink and Black laid mark (100m north of BYS marina wall)	port
Sorrento Channel Mark 10	port
Pink 1 laid mark (500m North of Rye Pier)	port
Pink 2 laid mark (400m South of Sth Channel Pile)	port
<b>DIVISION 1 ONLY</b>	
Pink 1 laid mark (500m North of Rye Pier)	port
Pink 2 laid mark (400m South of Sth Channel Pile)	port
Sth Channel Pile	starboard
Pink 3 laid mark (100m south of Sth Channel Mark 9)	port
Pink 4 laid mark (in the vicinity of Sth Channel Mark 7)	port
SSCBC North mark	starboard
Sorrento Channel Mark 8 (Red Pile)	port
Box finish SI 28.6	

\* SSCBC Centre mark may or may not be relevant to the course you sail – It will depend upon the wind direction on the day and the position of the start line.

#### POSITION OF LAID MARKS

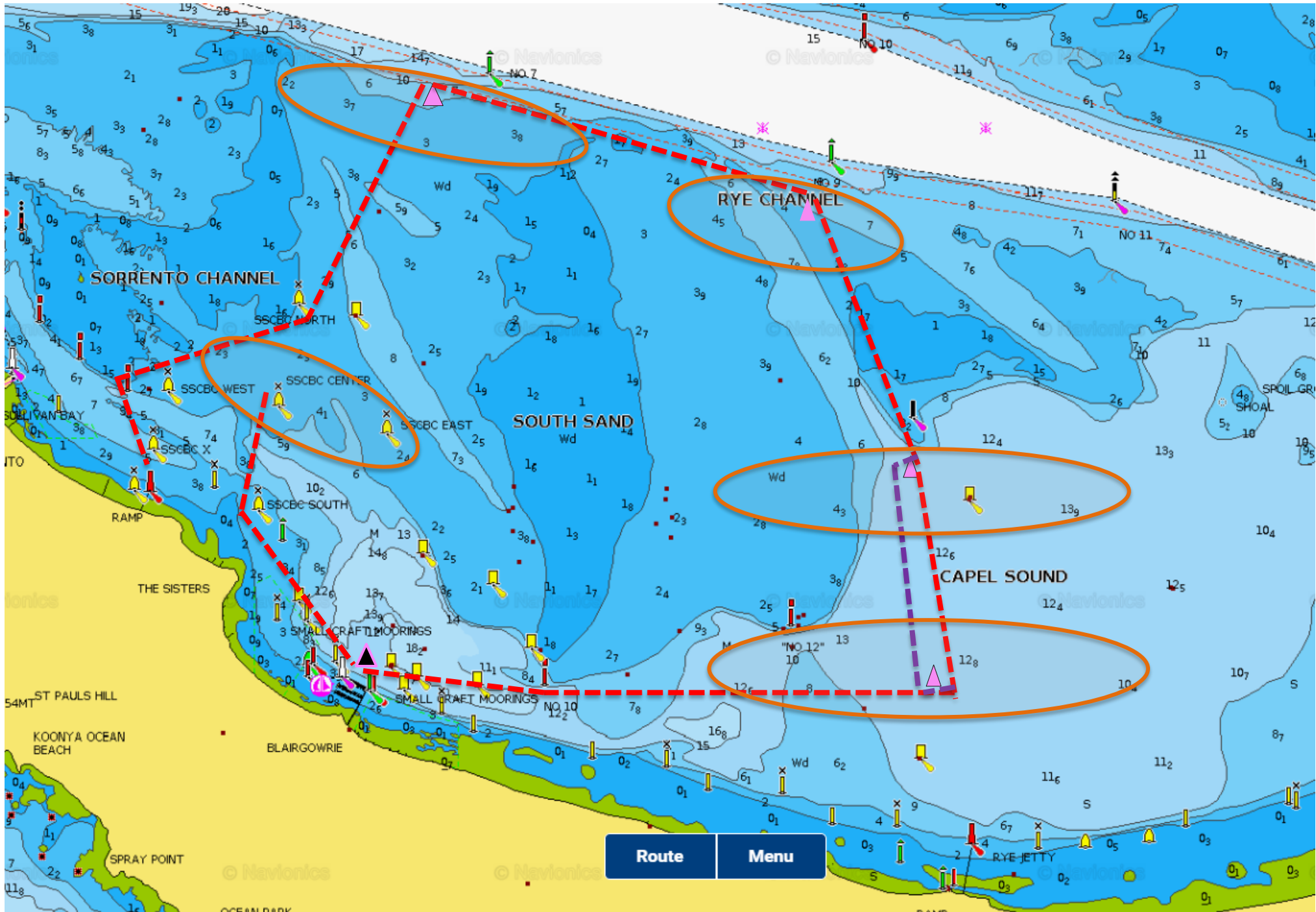
The positions above are approximate positions / vicinities and may be located differently such as to avoid BYS racing.

Subject to conditions, the Race Committee will attempt to set some windward legs. This will be done by setting the laid pink marks approximately within the oval boundaries. Change of course signals will not be used unless marks are subsequently moved.

#### GENERAL INFORMATION ABOUT SHORTENING OF COURSE

Races are shortened using RRS 32 and Race Signals

Shortening of the course for a particular division will be signalled by a Race Committee Vessel (RCV) displaying code flag S and the class flag at a mark of the course. When the Committee vessel does not display a class flag, the race is shortened for all classes. Boats shall finish between the nearby mark and the S flag on the RCV.



Route

Menu

