

# Race Sailing Instructions Notice to Competitors



## Div. 2 CBA Nationals & Lacco Cup 2018

18 & 25 February, 18 & 25 March

Sailed under the SSCBC Season NOR and SIs as varied by this RSI.

### ENTRIES AND ELIGIBILITY

SSCBC Block entries are automatically entered in this series. Other Couta Boats on the CBA register may enter and complete their crew lists here <https://sscbc.com.au/couta-boats/#cba-nationals-div-2-lacco-cup> The person in charge of a boat shall be a CBA Member.

### HANDICAPS

The Handicapping Committee will do it's best – It is essential that boats declare all changes in crew that could be material [DP]

### THE START

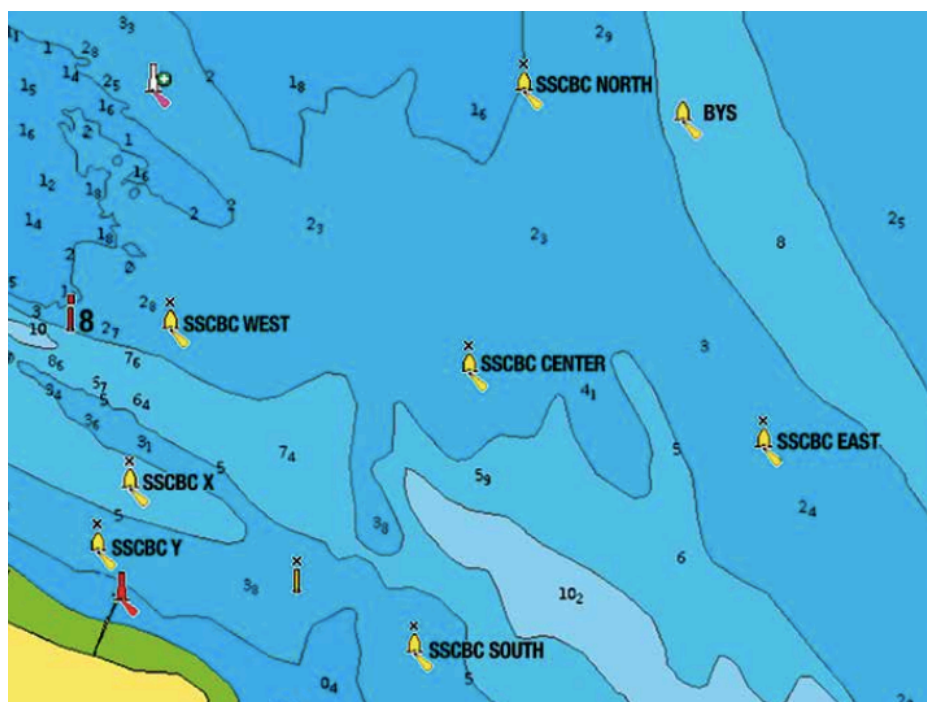
The Start will be a line between a staff displaying an orange flag on a Race Committee Vessel and a black and white mark (SI 17)

### THE FINISH

BOX Finish (SI 28.6)

### COURSES

Courses will be announced approximately 5 minutes before the warning signal with the Letter and number of laps of the course, such as "SC2" and These letters and numerals will be displayed on the committee vessel.



### THE COURSES

COURSES	SC	SW	EC	ES	CS	WS	WC	SE
LAPS	START	START	START	START	START	START	START	START
1	S-C	S-C-W	E-C	E-C-S	C-S	W-S	W-C	S-E
2	S-C	S-W	E-C	E-S	C-S	W-S	W-C	S-E
3	S-C	S-W	E-C	E-S	C-S	W-S	W-C	S-E
	8-FIN	8-FIN	8-FIN	E-8-FIN	C-8-FIN	W-8-FIN	W-8-FIN	8-FIN

## Some useful information and rules

### SI 9 - SAFER, FAIRER and MORE FUN FOR EVERYONE

All participants at our sailing club are expected to help our club sailing become even safer, fairer and more fun for everyone. [DP]

*The conditions for the Div 2 Nationals and Lacco Cup sees many boats with sailors who are not used to the boats and many boats who race infrequently. Boats must account for this when giving or getting room or mark room – Think ahead early!*

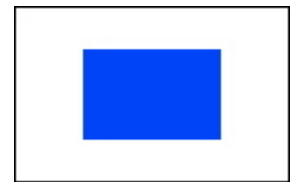
### SHORTENING COURSE

*There are two ways that courses can be shortened using RRS 32.2 and finishing at the mark or using SI 28.5*

**RRS 32.2** If the race committee signals a shortened course (displays flag S with two sounds), the finishing line shall be,

- (a) at a rounding *mark*, between the *mark* and a staff displaying flag S;
- (b) a line boats are required to cross; or
- (c) at a gate, between the gate *marks*.

The shortened course shall be signalled before the first boat crosses the finishing line.



### SI 28.5 - Shorten Fixed Course to Home –

If S Flag over H Flag is displayed with 2 sound signals boats shall round that mark, round mark 8 and then finish at the Box Finish line. This changes rule 32.2.

