

# Race Sailing Instructions Notice to Competitors



## Winter Series 3 June

Sailed under the SSCBC Season NOR and SIs as varied by this RSI.

### THE START

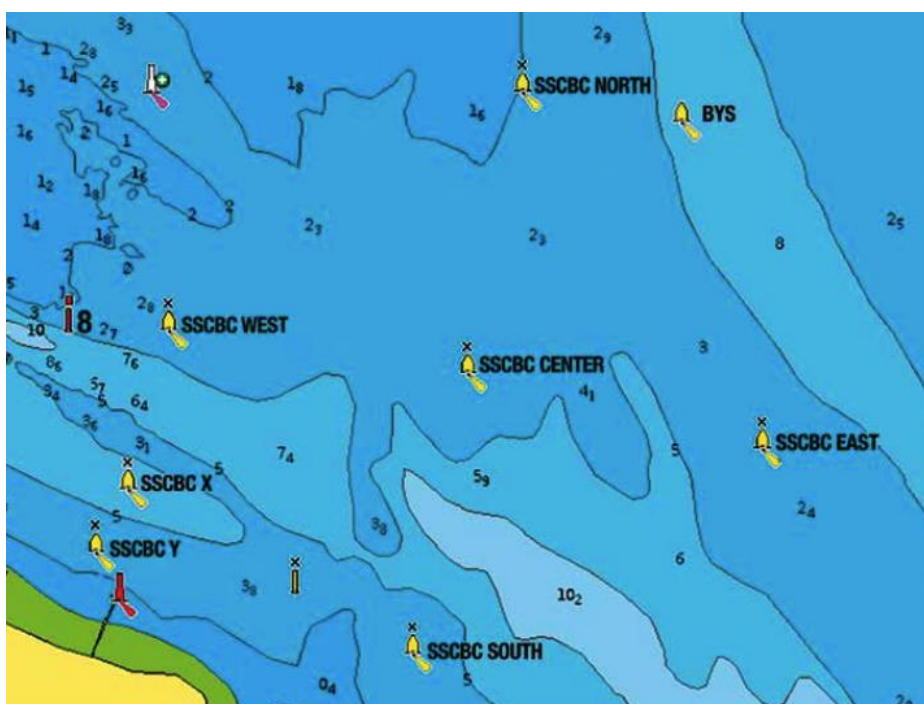
The Start will be a line between a staff displaying an orange flag on a Race Committee Vessel – (probably Gillie D) and a black and white mark (SI 17)

### THE FINISH

BOX Finish (SI 28.6)

### COURSES

Courses will be announced approximately 5 minutes before the warning signal with the Letter and number of laps of the course.



### THE COURSES

COURSES	S	SE	E	NE	N	NW	W	SW
LAPS	START	START	START	START	START	START	START	START
1	S-E-N	S-C-W	E-N-W	E-C-S	N-W-S	N-W-S	W-S-E	S-E
2	S-C	S-W	C-W	E-S	C-S	W-S	W-C	S-E
3	S-C	S-W	C-W	E-S	C-S	W-S	W-C	S-E
4	S-C	S-W	C-W	E-S	C-S	W-S	W-C	S-E
5	S-C	S-W	C-W	E-S	C-S	W-S	W-C	S-E
	8-FIN	8-FIN	8-FIN	E-8-FIN	C-8-FIN	W-8-FIN	W-8-FIN	8-FIN