

## Wooden Boat Shop Stern Chaser

### NOTICE TO COMPETITORS - RACE SAILING INSTRUCTIONS (RSI)

Conducted under the SSCBC 2018-19 Season NOR & SIs as modified by this RSI.

#### 1. SCHEDULE OF EVENTS

Briefing at the coloured wall	1230
First Warning Signal	1355
First Starting Signal	1400
Sternchaser – Target Time	100 Minutes

#### 2. THE START

- Tower start
- Each start will be displayed on the back of the Start boat. The fall of the number signalling the start of that minute.
- Starting times will be available by 10 am Saturday 1<sup>st</sup> December.
- Individual recalls will be signalled by an announcement on VHF 73.
- Amends RRS 26 and 29.1

#### 3. RACE SCORING & SHORTEN COURSE

- So that the race will be shortened as close to 100 minutes as possible for each division. Aggregate Handicap results for this race will be determined by the order in which boats cross the finish line. Aggregate Line Honours results will be determined by a boat's elapsed time.
- Rule 32 is changed

#### 4. COURSE

**START** Tower start

SSCBC South

Pink inflatable (approx 100-300 mtrs NW of BYS marina)

Sorrento Channel # 10 (red pile)

Pink inflatable (approx 100-300 mtrs North of Rye Pier)

Pink inflatable (approx 1 nautical mile North of Rye Pier)

Sorrento Channel # 12 (red pile)

Sorrento Channel # 10 (red pile)

Pink inflatable (approx 100-300 mtrs NW of BYS marina)

SSCBC Club Mark S

SSCBC Club Mark E

SSCBC Club Mark N

SSCBC Club Mark W

Sorrento Channel #8 (red pile)

SSCBC Club Mark X and Y

SSCBC Club Mark S

SSCBC Club Mark E

SSCBC Club Mark N

SSCBC Club Mark W

Sorrento Channel #8 (red pile)

to STB

to PORT

to PORT

to PORT

to PORT

to STB

to STB

to STB

to STB

to PORT

to PORT

to PORT

to PORT

GATE

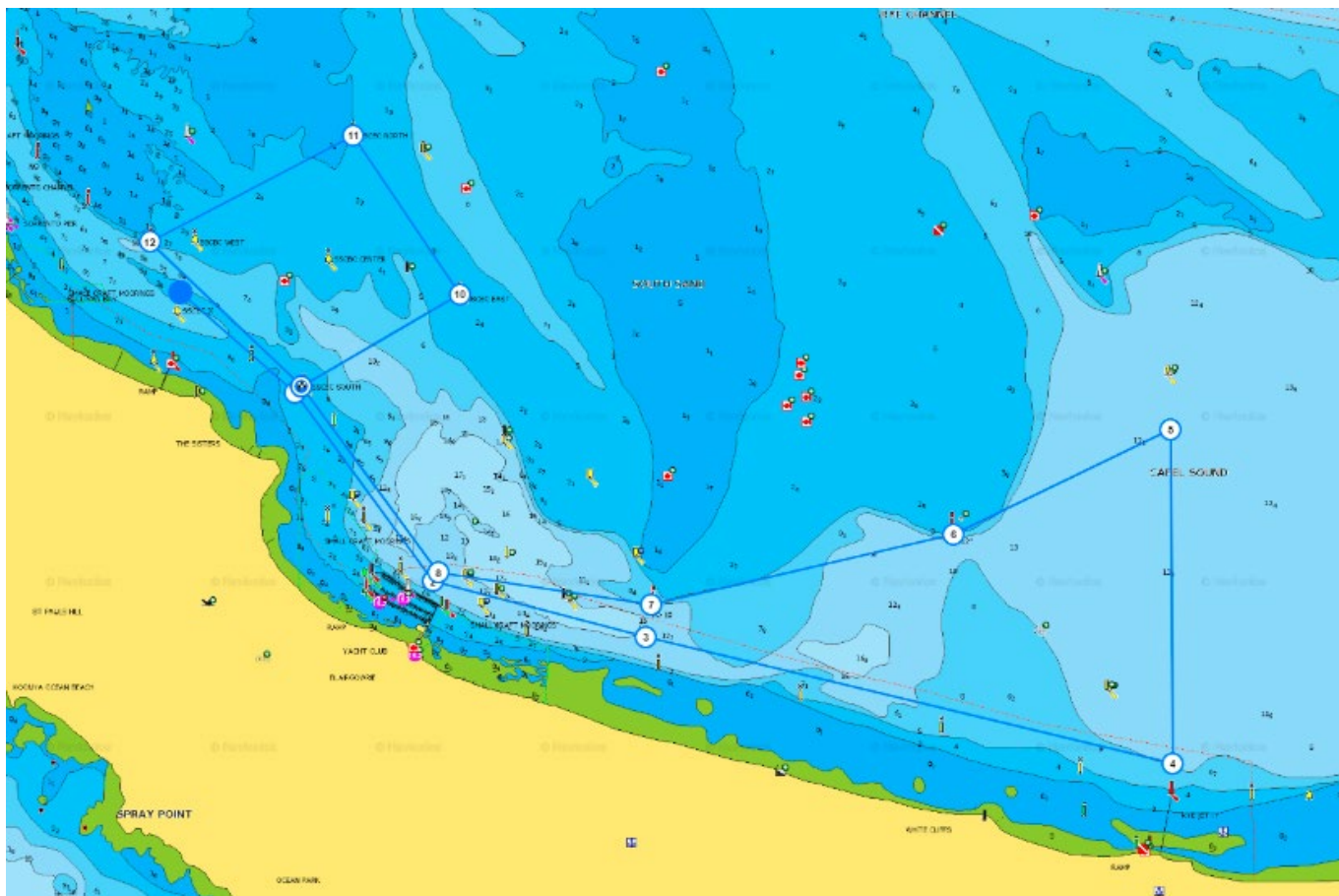
to PORT

to PORT

to PORT

to PORT

FINISH



## 5. TOWER START PROCEDURE

<b>Warning</b>	5	1 Sound / 5 Lights
<b>Preparatory</b>	4	4 Lights
	3	3 Lights
	2	2 Lights
<b>1 Minute</b>	1	1 Light
<b>Start</b>	GO!	1 Sound / No lights

The starting line between Mark X and the WHITE line on the wall of the Tower. To start, a boat shall pass between Mark Y (clearance mark only) and Mark X.