

# Yabby Great Fort Run CBA State Championships 21 February 2020



## Notice to Competitors - Race Sailing Instructions

Sailed under the SSCBC Season NOR and SIs as varied by this RSI.

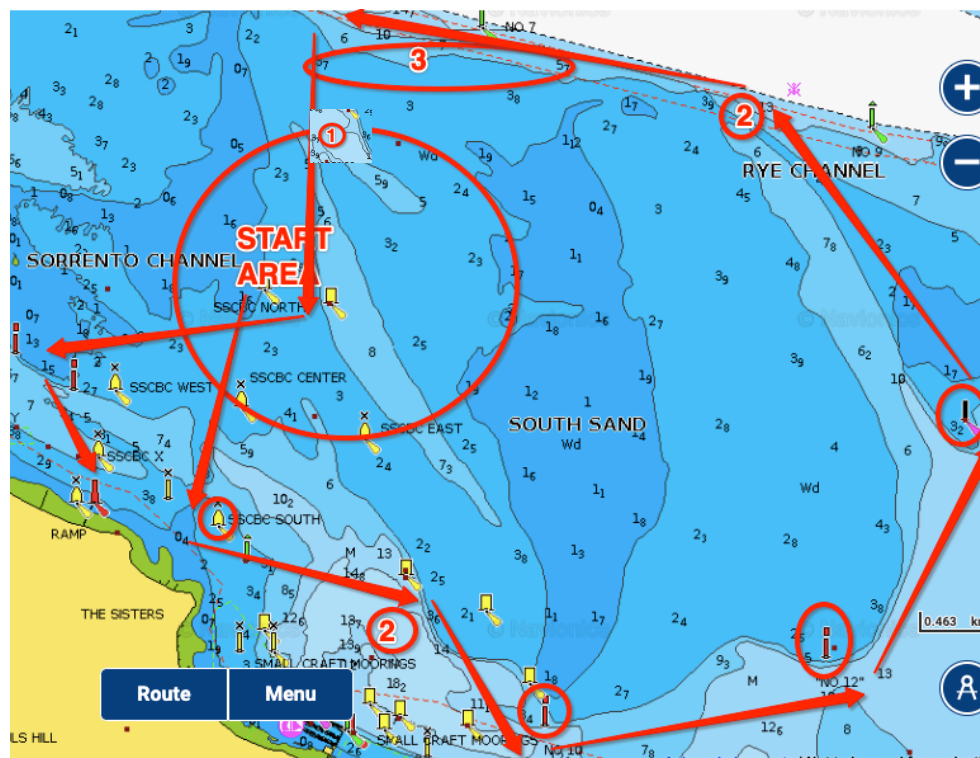
### SCHEDULE – Warning Signals

- Couta Boats Div 2 1300 hrs
- Couta Boats Div 1 Follows

### Courses

On the Wind Start SI 15 and Fixed Finish (BOX) (Pursuit RSI 2.6)

Pass to	
START	On the Wind
Port	SSCBC South Mark
Starboard	Pink 1 - approx. 350m North-West of BYS
Port	Sorrento Channel No. 10 Red Pile
Port	Sorrento Channel No. 12 Red Pile
Port	South Channel Pile
Port	Pink 2
Port	Pink 3
Gate	GATE: SSCBC North and BYS mark to the East
Port	Sorrento Channel No. 8 Red Pile
FINISH	Fixed Finish (BOX) Pursuit race RSI 2.6



### TIME LIMIT

The Finish Window in SI 20.2 is changed to a time limit of 5 hours.

### SAFETY NOTES

Note that in the event of an ambulance being required for an injury, we may meet the ambulance at the Rye Boat Ramp or Portsea Pier instead of the Club Jetty. – It depends on the incident, location and conditions.

Please monitor VHF 73 throughout the race to provide mutual safety support to each other.