



## Marcus Burke

# Wooden Launch Navigation Rally

### Start time.

The start, finish time and speed for each boat needs to be nominated by the boat 20 mins prior to the boat's nominated start time. The Finish window for all boats is 1230 - 1300.

### Scoring.

Points are accumulated along the route as boats arrive at nominated points – namely, at South Channel No.7, SSCBC Centre, and at the finish; and potentially an undisclosed location. Each second off the calculated time equals 1 point deducted from the boat's score. The Scavenger Hunt prize tasks that are completed en-route will accumulate points towards the Scavenger hunt prize. The details for the three tasks are listed below the Course Instructions and the Course Diagram.

### Position Reporting.

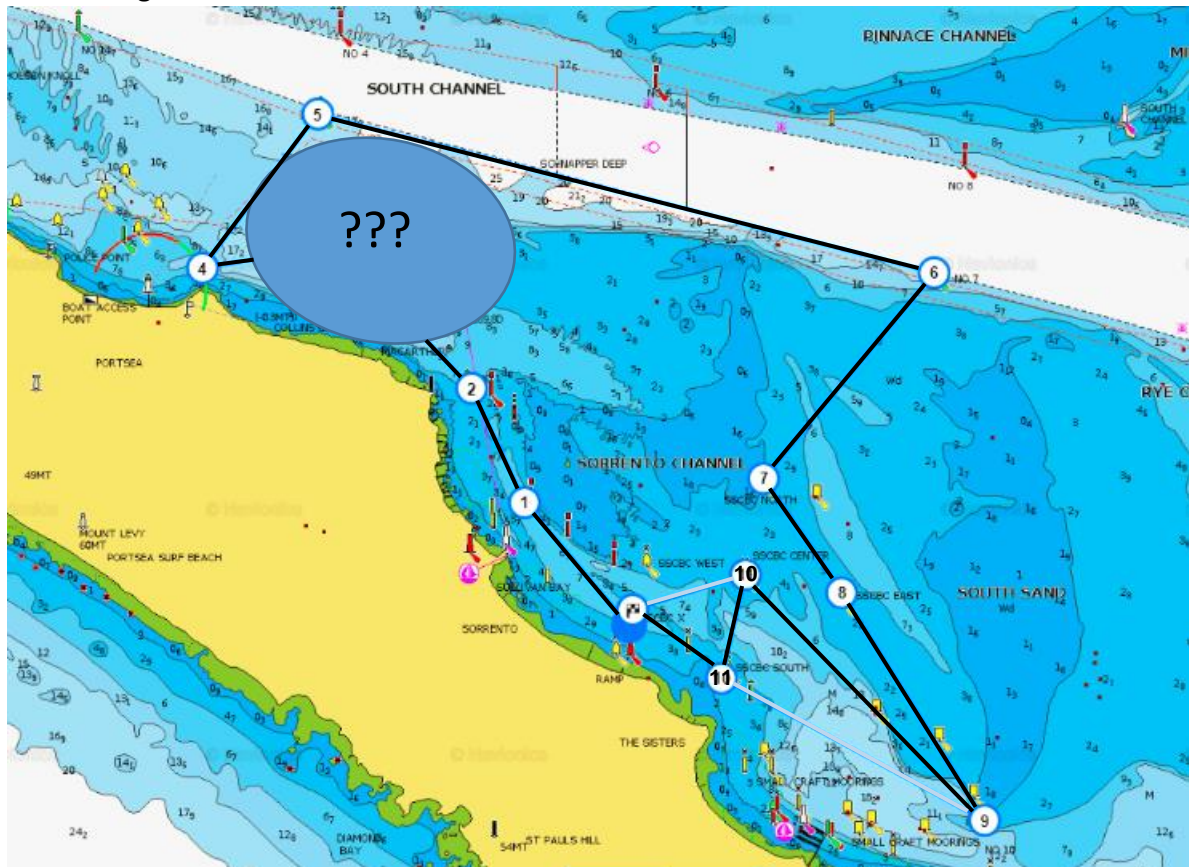
A boat is required to radio "Sorrento Tower" notifying the time of passing South Channel No.7 and SSCBC Centre .

### Course Instructions.

#### Course length 11.2 NM

MARK	Leave to	DISTANCE NM	BEARING TRUE	LATITUDE	LONGITUDE
Box Start – SSCBC X	Starboard			38°20.440'S	144°45.420'E
Sorrento Ch. No.4	Starboard	.66 NM	318	38°19.948'S	144°44.860'E
Sorrento Ch. No.1	Port	.54 NM	331	38°19.475'S	144°44.520'E
Virtual W.P.	Port	not supplied	not supplied	38°18.589'S	144°43.959'E
Port Lateral off Point Franklin	Starboard	not supplied	not supplied	38°18.970'S	144°43.090'E
South Ch. No.3	Starboard	.82	38	38°18.320'S	144°43.730'E
South Ch. No. 7	Starboard	2.7 NM	105	38°19.005'S	144°47.050'E
SSCBC North	Port	1.14 NM	220	38°19.880'S	144°46.120'E
SSCBC East	Port	.6 NM	146	38°20.380'S	144°46.550'E
Sorrento Ch. No.10	Starboard	1.13 NM	148	38°21.335'S	144°47.315'E
SSCBC Centre	Port	1.47 NM	317	38°20.275'S	144°46.025'E
SSCBC South	Starboard	.4 NM	191	38°20.665'S	144°45.925'E
Box Finish SSCBC X	Starboard	.46 NM	298	38°20.440'S	144°45.420'E

### Course Diagram.



### Scavenger Hunt.

Task 1a What is the Flag displayed on SSCBC South?

Task 1a What does that signal mean to a sail boat that is racing?

Task 2. Give your position when the western end of SSCBC jetty bears  $256^{\circ}T$  at a distance 0.93 NM and the White quick flash light at the western end of Blairgowrie bears  $191^{\circ}T$  at a distance 0.94 NM.

Task 3. What is the distance from the mark at approximately  $38^{\circ} 20.582' S$   $144^{\circ} 44.714' E$  to the Sorrento Ch. No.10?