

# Steadfast IBG Insurance - Great Fort Run

## 27 February 2021



### Notice to Competitors - Race Sailing Instructions

Sailed under the SSCBC Season NOR and SIs as varied by this RSI.

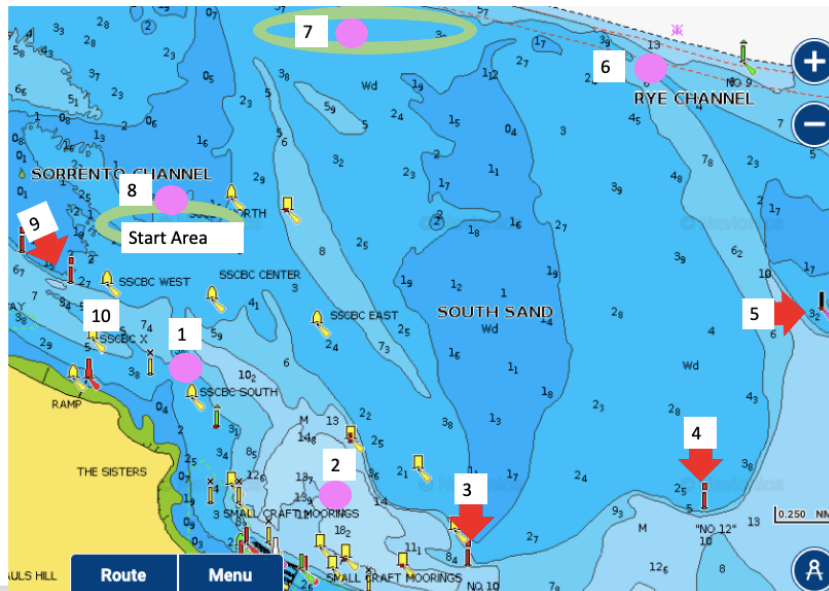
#### SCHEDULE – Warning Signals

- Couta Boats Div 2 1400 hrs
- Couta Boats Div 1 1430 hrs

#### Courses

##### On the Wind Start and Fixed Finish (BOX)

No	Pass to	Description
0	START	On the Wind – The Start
1	Port	Pink – to Windward
2	Starboard	Pink - approx. 350m North-West of BYS
3	Port	Sorrento Channel No. 10 Red Pile
4	Port	Sorrento Channel No. 12 Red Pile
5	Port	South Channel Pile
6	Port	Pink 3
7	Port	Pink 4
8	Port	Pink 5 Approximately West of SSCBC North
9	Port	Sorrento Channel No. 8 Red Pile
10	FINISH	Fixed Finish (BOX) Line between Y and the BOX leaving X clearance mark to Starboard



#### SAFETY NOTES

Note that in the event of an ambulance being required for an injury, we may meet the ambulance at the Rye Boat Ramp instead of the Club Jetty. – It depends on the incident, location and conditions.

Please monitor VHF 73 throughout the race to provide mutual safety support to each other.