



Marcus Burke

Wooden Launch Navigation Rally 2021

Times.

Nominated start time, waypoint times at South Ch. No. 7 and SSCBC West and finish time need to be submitted by the boat at time of entry. The Finish Window for all boats is 1230 - 1300.

Scoring.

Points are accumulated at South Channel No.7, SSCBC West, and at the finish. Each second off the nominated time equals 1 point deducted from the boat's score.

Other tasks that are completed will accumulate points, the details of which are listed below the Course Instructions and the Course Diagram.

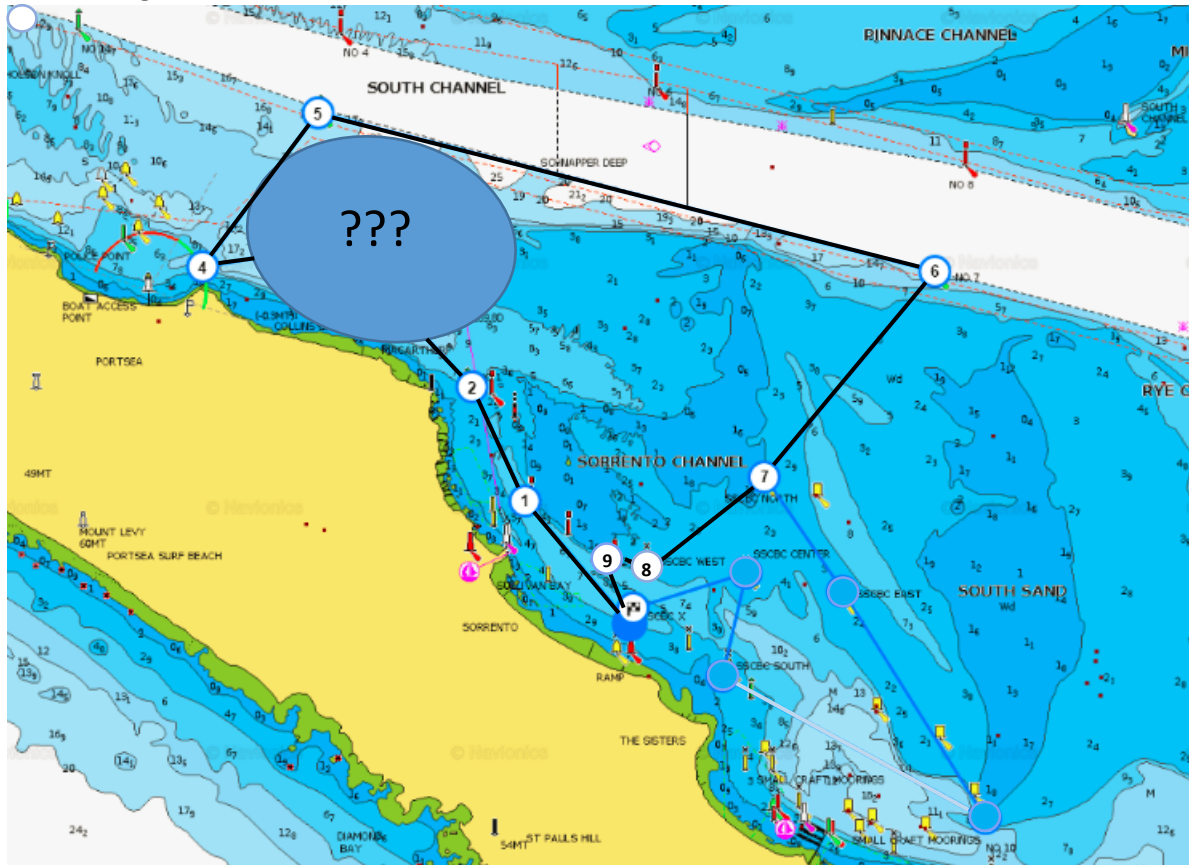
Course Instructions.

Course length 8.16 NM

MARK	NUMBER ON CHART	Leave Mark To	DISTANCE NM	BEARING TRUE	LATITUDE	LONGITUDE
Box Start – SSCBC X		Starboard			38°20.440'S	144°45.420'E
Sorrento Ch. No.4– this is a “no-wash” leg with boat-speed restricted to 3 knots	1	Starboard	0.66 NM	318	38°19.948'S	144°44.860'E
Sorrento Ch. No.1– this is a “no-wash” leg with boat-speed restricted to 3 knots	2	Port	0.54 NM	331	38°19.475'S	144°44.520'E
Virtual W.P.	3	Port	??	??	38°18.990'S	144°43.900'E
Port Lateral off Point Franklin	4	Starboard	??	??	38°18.970'S	144°43.090'E
South Ch. No.3	5	Starboard	0.82NM	38	38°18.320'S	144°43.730'E
South Ch. No. 7	6	Starboard	2.7 NM	105	38°19.005'S	144°47.050'E
SSCBC North	7	Starboard	1.14 NM	220	38°19.880'S	144°46.120'E
SSCBC West	8	Starboard	0.56 NM	237	38°20.189'S	144°45.524'E
Sorrento Ch. No. 8	9	Port	0.17 NM	262	38°20.214'S	144°45.309'E
Box Finish SSCBC X		Port	0.24 NM	159	38°20.440'S	144°45.420'E

For today's event, you might assume a flood tide of 0.5 knots over the course. Its direction will vary and AUS158 may be helpful to choose the direction of the tidal stream. You may choose to ignore the tide and assume that your ETA at the critical waypoints will not be affected, but as a navigation exercise, the tide effect might be significant.

Course Diagram.



Scavenger Hunt.

Task 1. There is a "V" Flag displayed on SSCBC West? What does that signal mean to a vessel at a sailing regatta?

Task 2. What is your position when the western end of SSCBC jetty bears $256^{\circ}T$ at a distance 0.93 NM and the White quick flash light at the western end of Blairgowrie bears $191^{\circ}T$ at a distance 0.94 NM.

Task 3. What is the distance from the mark at approximately $38^{\circ} 19.582' S$, $144^{\circ} 44.714' E$, to the Sorrento Channel No.10?

Entry Form.

Boat Name: Registration Number:

Skipper:

Crew:

Start Time: Cruising Speed:knots Nominated Finish Time:

Nominated time at South Ch. No. 7 :

Nominated time at SSCBC Centre :

Voyage plan:

Course length 8.16 NM

MARK	NUMBER ON CHART	Leave Mark to	DISTANCE NM	BEARING ° TRUE	Estimated Time	Actual Time
Box Start – SSCBC X		Starboard				
Sorrento Ch. No.4– this is a “no-wash” leg with boat-speed restricted to 3 knots	1	Starboard	0.66 NM	318		
Sorrento Ch. No.1– this is a “no-wash” leg with boat-speed restricted to 3 knots	2	Port	0.54 NM	331		
Virtual W.P.	3	Port				
Port Lateral off Point Franklin	4	Starboard				
South Ch. No.3	5	Starboard	0.82NM	38		
South Ch. No. 7	6	Starboard	2.7 NM	105		
SSCBC North	7	Starboard	1.14 NM	220		
SSCBC West	8	Starboard	0.56 NM	237		
Sorrento Ch. No. 8	9	Port	0.17 NM	262		
Box Finish SSCBC X		Starboard	.24 NM	159		

Signed:

Date: